

# Diabetes

TOTAL

**37.3** million  
people  
(11.3% of the US)

Diagnosed:  
**28.7 million**

Undiagnosed:  
**8.5 million**

Source: Centers for Disease Control and Prevention. National Diabetes Statistics Report website. <https://www.cdc.gov/diabetes/data/statistics-report/index.html>. Accessed [11/06/2023].

## Key Diabetes Factors among Hispanics

Diabetes incidence rate

**1.6x** times  
higher  
among Hispanics.

Between 2018-19, 11.8% of Hispanics 18 years or older were diagnosed with diabetes, compared with 7.4% for non-Hispanic whites.<sup>i</sup>

**Greater**  
morbidity and  
mortality.

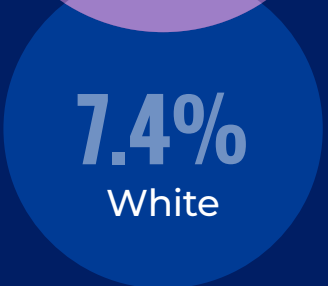
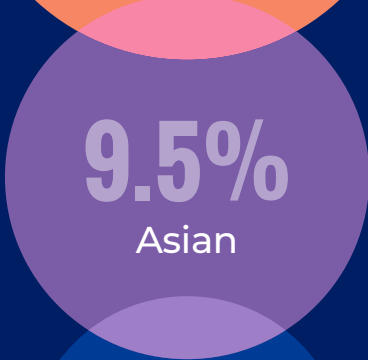
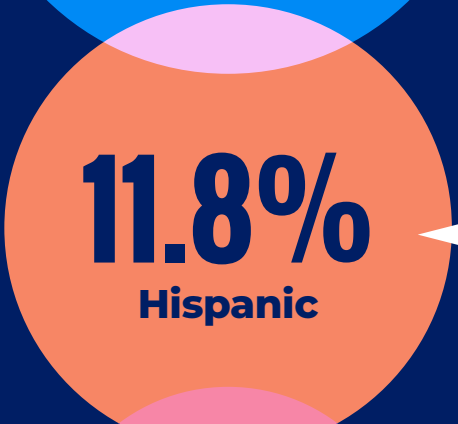
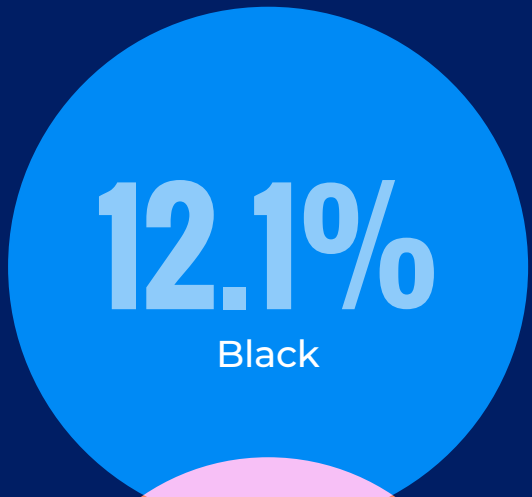
Hispanics are 1.3 times more likely to die from diabetes than non-Hispanic whites,<sup>ii</sup> and twice as likely as non-Hispanic white diabetics to be admitted to a hospital for a lower extremity amputation (25.4 v. 12.5 per 1,000).<sup>iii</sup>

<sup>i</sup> Centers for Disease Control and Prevention. National Diabetes Statistics Report website. <https://www.cdc.gov/diabetes/data/statistics-report/index.html>. Accessed [11/03/2023].

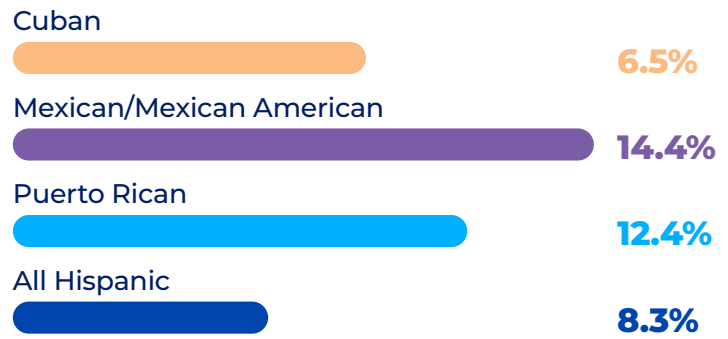
<sup>ii</sup> Centers for Disease Control and Prevention. National Vital Statistics Reports, Vol. 69, No. 13, January 12, 2021

<sup>iii</sup> Centers for Disease Control and Prevention. National Diabetes Statistics Report: Estimates of Diabetes and Its Burden in the United States, 2017. Atlanta, GA: U.S. Department of Health and Human Services; 2017.

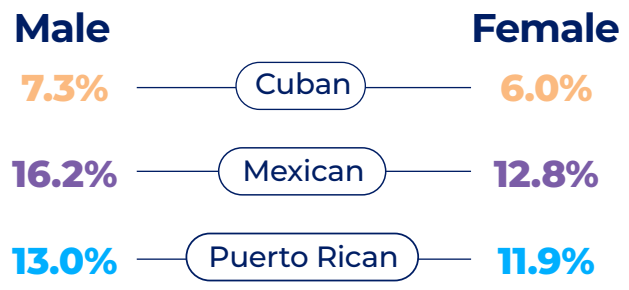
# Age-Adjusted Percentage of Population with Diagnosed Diabetes, by Race, U.S., 2019



## Age-Adjusted Percentage of Population with Diagnosed Diabetes, Hispanics, U.S., 2019



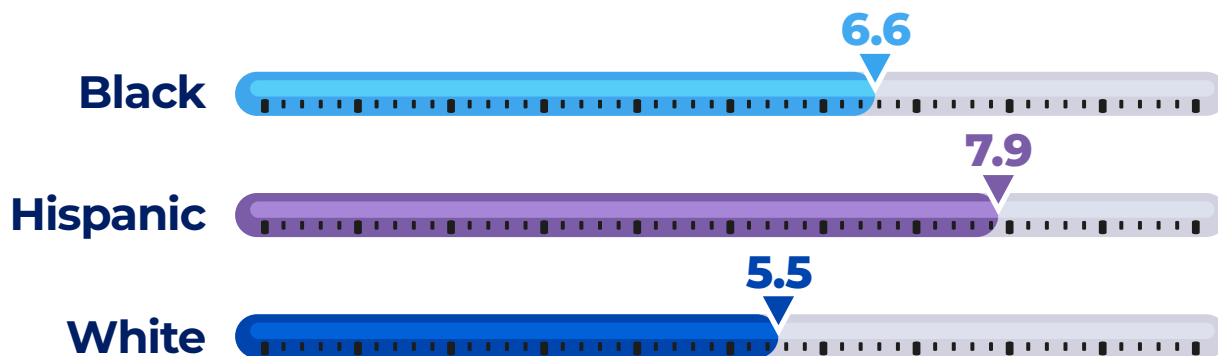
## Age-Adjusted Percentage of Population with Diagnosed Diabetes, by Hispanic Origin and Sex, U.S., 2017 - 2018



Source: American Diabetes Association. Statistics About Diabetes website. <https://diabetes.org/about-diabetes/statistics/about-diabetes#:~:text=Diabetes%20by%20race%2Fethnicity&text=12.1%25%20of%20non%2DHispanic%20blacks,7.4%25%20of%20non%2DHispanic%20whites> Accessed [11/06/2023].

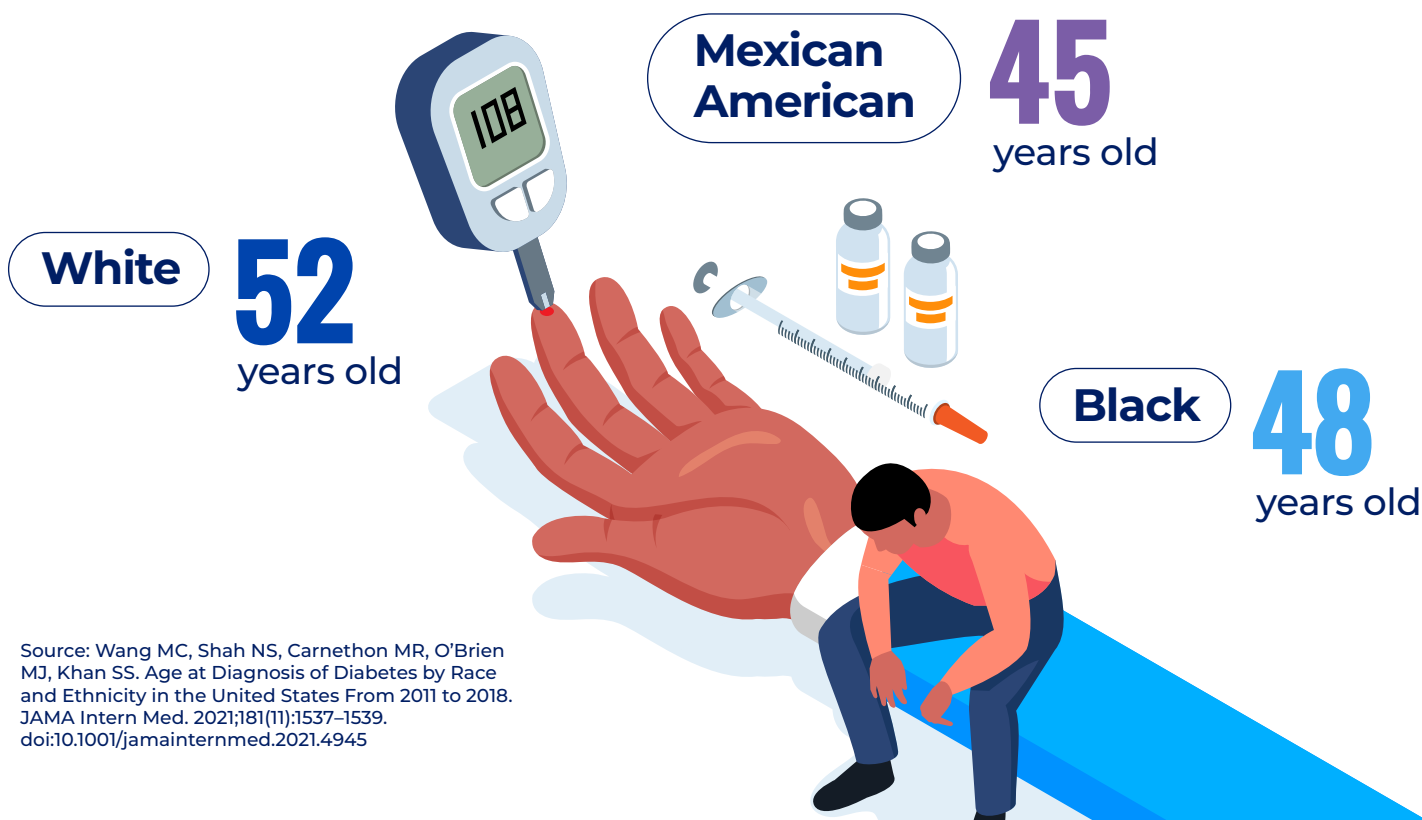
Source: U.S. Department of Health and Human Services. Centers for Disease Control and Prevention. National Diabetes Statistics Report. Estimates of Diabetes and Its Burdens in the United States. 2020.

# Age-Adjusted **Incidence** of Diagnosed Diabetes per 1,000 Population Aged 18 Years or Older, by **Race/Ethnicity**, U.S., 2018-2019



Source: Centers for Disease Control and Prevention (CDC), 2018-2019 National Health Interview Survey, National Diabetes Statistics Report website. <https://www.cdc.gov/diabetes/data/statistics-report/index.html>. Accessed [11/6/23].

# **Median Age** at Diabetes Diagnosis by **Race/Ethnicity**, U.S., 2011-2018



Source: Wang MC, Shah NS, Carnethon MR, O'Brien MJ, Khan SS. Age at Diagnosis of Diabetes by Race and Ethnicity in the United States From 2011 to 2018. *JAMA Intern Med.* 2021;181(11):1537-1539. doi:10.1001/jamainternmed.2021.4945